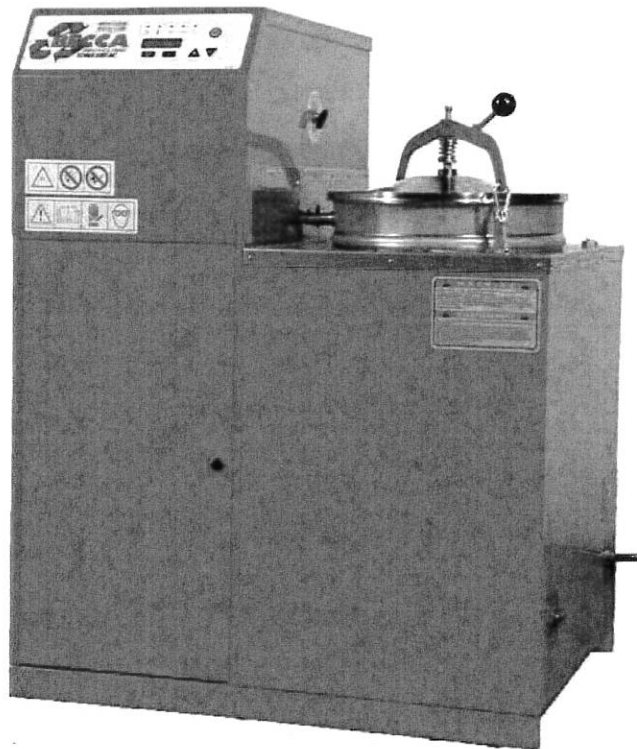


BECCA[®]

INSTALLATION GUIDE

SOLVENT SAVER[™] Recyclers



Technical Assistance call (800) 655-5649

TABLE OF CONTENTS

	<u>PAGE</u>
Section 1	
Tools Required	3
Parts Required.....	3
Un-packaging the unit.....	3
 Section 2	
How to install a Solvent Saver™ Recycler	4
How to connect to a Gun Cleaner	4-5
Installing the Ground wire.....	5
Electrical connection.....	5
 Final Section	
Warranty & Contact Information	6

SECTION 1

TOOLS REQUIRED

Phillips Screw Driver for all Screws on the unit
Flat Screw Driver or Snips for removal of Staples
Robertson Square Screw Driver for Pallet Screws
Teflon Tape
Adjustable Wrench

PARTS REQUIRED

- (2) 45 Degree Elbows 6" Dia. (If complex connection additional Duct fittings may be required)
- Hose and Fittings for connection to Regulator
- Disconnect per classification area (See General Arrangement Drawings - 220 Volt 1 Phase Power 5 - 6 Ft from units at least 18" above the ground)
- Compressed Air Line next to unit

UNPACKAGING THE UNITS

Step 1: Carefully inspect the shipping carton for any signs of transport damage.

Step 2: Begin by removing the staples attaching the box to the skid (A Flat Screw Driver or Snips will do the job). Carefully remove your Spray Gun Washer from the shipping carton. Remove the four screws from the bottom of the Spray Gun Cleaner connected to the pallette. Remove the unit from the pallette and place it in the general area for installation. You are ready to begin with the installation of the Spray Gun Cleaner.

Warning! Do not use electrical or spark producing equipment in existing Paint Mix Rooms until all potential Hazards and (vapors, material spills etc) have been removed



Note: Workstation shown w/ optional Cover Door

SECTION 2

SOLVENT SAVER™ **RECYCLERS**

Step 1: Locate the container of parts (In Wash Basin or Storage Area) and inspect the inventory list to make sure all the parts are included.

If any parts are missing, contact the BECCA. Included is the Filter/Regulator and parts to connect the Gun Cleaner to the Recycler.

HOW TO CONNECT TO A SPRAY GUN CLEANER

(Skip if only setting up Recycler)

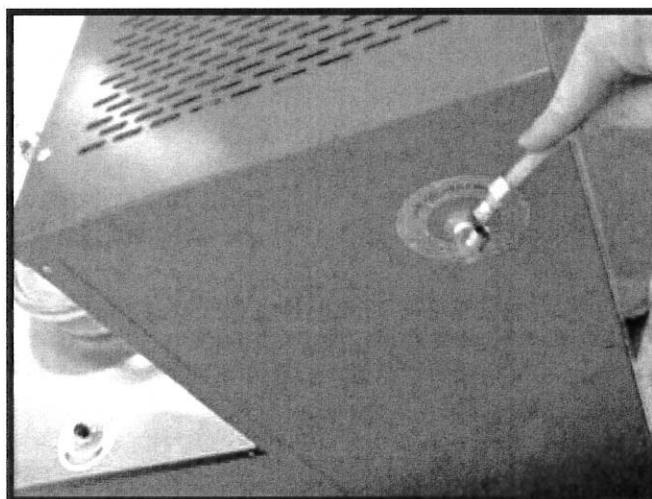
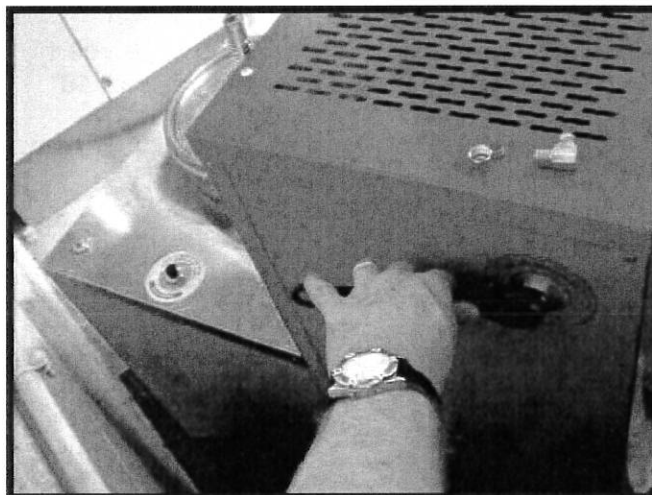
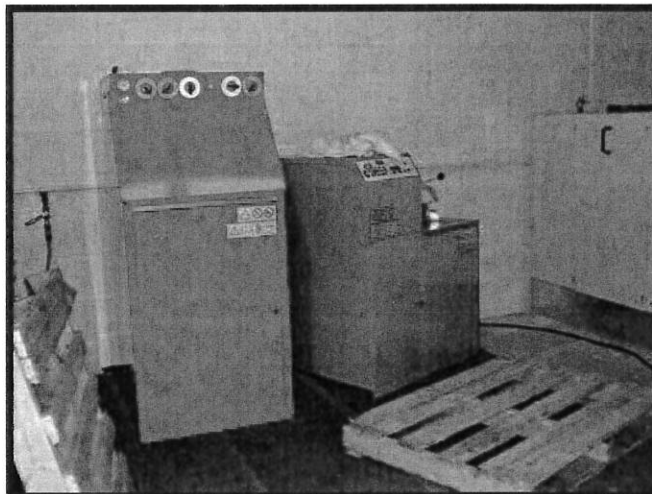
Step 2: Now move the Recycler on the right side of the Spray Gun Cleaner (When facing equipment)

Note: The Recycler can be placed anywhere up to 35 feet from gun washer. This requires additional longer nylon plastic tubing.

Step 3: On the back of the Recycler there is a plug, like the one on the Gun Cleaner. Remove this.

Step 4: Inside the container of parts is another 90-degree brass elbow. Use this to replace the plug.

Step 5: Attach the plastic tubing from the gun washer to this elbow.



**You are now connected to the
SPRAY GUN CLEANER!**

**Note: For Recyclers w/ optional
Three Way Valve Kit for Two Gun
Washers Use Part # 824542 and
follow the Included Instructions.**

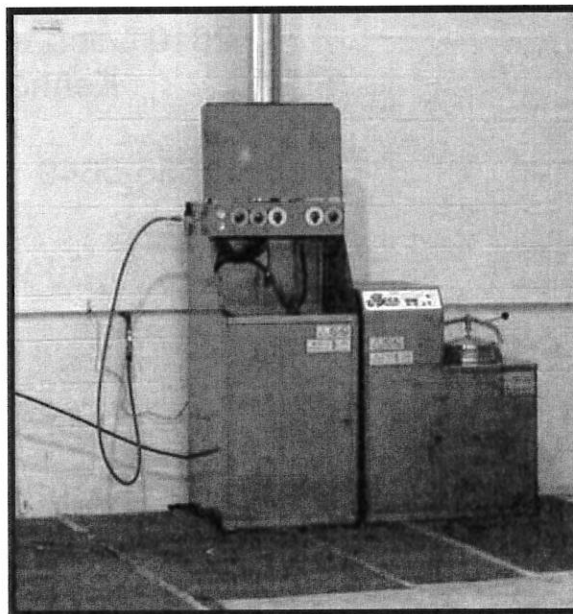
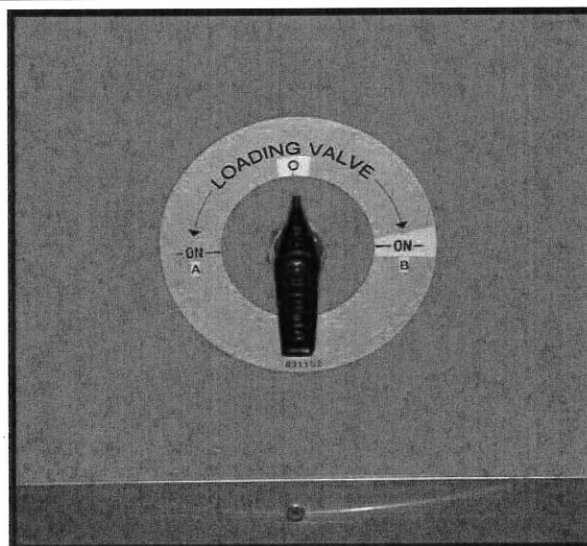
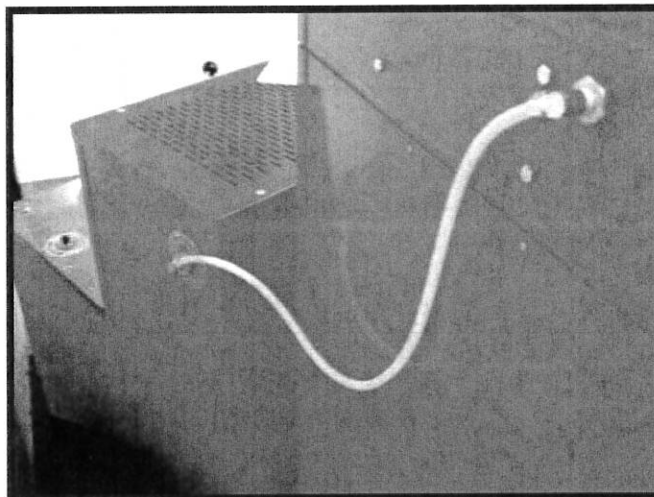
ELECTRICAL CONNECTION

Step 7: Now we are ready to have the electrician wire to 220v / 1 phase power to the electrical cable that is provided.

The 6-gallon recycler requires 10amp service and the 3-gallon requires 6amp service.

Note: Please Review the "General Arrangement" Drawing - MAKE SURE ALL CODE REQUIREMENTS ARE FOLLOWED.

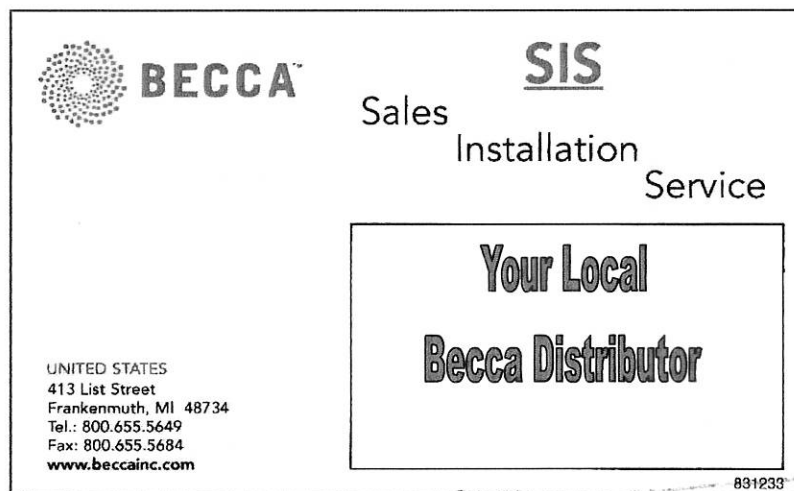
**You are now ready to
follow the Start-up
Process. Please follow
the Becca "Start-up
Guide"**



WARRANTY INFORMATION / TECHNICAL ASSISTANCE

The Warranty of your system begins with the Certified Start-up by your local BECCA Distributor. Make sure this is completed and you receive a copy of the Certified Start-up document.

For more information, prices or technical assistance,
contact your local BECCA distributor or call / fax our
BECCA Care™ Numbers:



2010 Cobb International Blvd Ste H
Kennesaw, GA 30152

Tel: (800) 655-5649

Fax: (800) 655-5684

Copyright © 2003 by BECCA Inc. All Rights Reserved.